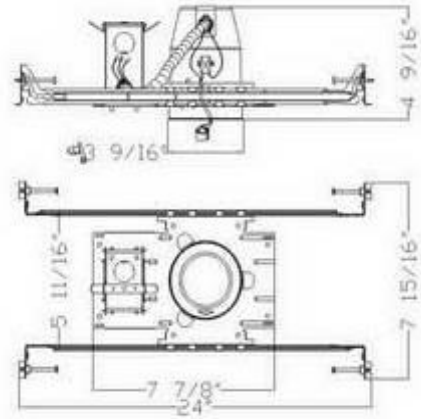


**A35  
New Construction Non-IC Recessed  
Housing**

<b>Catalog #</b>		<b>Prepared by</b>	
<b>Project</b>		<b>Date</b>	
<b>Notes</b>			



**3.5" New Construction Non-IC Recessed Housing**

**Housing**

- 1) Die-formed aluminum for maximum heat dissipation and rust protection
- 2) Designed for New Construction installation
- 3) Housing can be installed in 1/2" to 1-3/8" thick ceilings.
- 4) Housing is Non-IC rated must be kept at least 3" away from insulation

**Hanger Bar**

- 1) Allow housing to be positioned and locked at any point within a 24" joist span.
- 2) Can be shortened for 12" joists
- 3) Can be positioned on long or short axis of the housing
- 4) Contain integral nail
- 5) Hanger fit onto T-bar spline for quick alignment

**Junction Box**

- 1) ETL listed for through branch wiring
- 2) 4 in-4 out J-box
- 3) Designed for straight through conduit runs
- 4) 1/2" and 3/4" romex wiring knockouts

**Order Matrix**

<b>A</b>	<b>B</b>	<b>C</b>	<b>D</b>
----------	----------	----------	----------

<b>Item No.:</b> A35
----------------------

<b>A</b>	Series
A35	3.5" / New Construction NON-IC

<b>B</b>	Input Voltage
120V	
277	277V

<b>C</b>	Wattage
L3	LED 3W
L8	LED 8W

RECESSED DOWNLIGHT



## Lamp

LED GU10 Lamp 8W max. MR16 GU5.3 8W Max. PAR16 E26 8W Max.  
CRI>80%  
PF>0.9  
Color Temperature:2800K-6500K

D	Color Temperature
28K	2800k
35K	3500K
50K	5000K
60K	6000K

## Listing

ETL listed for damp location W/Feed through

**Other Special requirement please confirm with factory**

RECESSED DOWNLIGHT



**3.5" TRIM OPTIONS**



**B35001/3.5 inch Baffle Trim**

Lamp : MR16 LED GU5.3 8W Max.  
GU10 LED GU10 8W Max.  
PAR16 LED E26 8W Max.



**B35002/3.5 inch Reflector Trim**

Lamp : MR16 LED GU5.3 8W Max.  
GU10 LED GU10 8W Max.  
PAR16 LED E26 8W Max.



**B35003/3.5 inch Eyeball Trim**

Lamp : MR16 LED GU5.3 8W Max.  
GU10 LED GU10 8W Max.  
PAR16 LED E26 8W Max.



**B35005/3.5 inch Slot Trim**

Lamp : MR16 LED GU5.3 8W Max.  
GU10 LED GU10 8W Max.  
PAR16 LED E26 8W Max.

RECESSED DOWNLIGHT



**B35014/3.5 inch Pinhole Trim**

Lamp : MR16 LED GU5.3 8W Max.  
GU10 LED GU10 8W Max.  
PAR16 LED E26 8W Max.



**B35024/3.5 inch Adjustable Trim**

Lamp : MR16 LED GU5.3 8W Max.  
GU10 LED GU10 8W Max.  
PAR16 LED E26 8W Max.





**B35071/3.5 inch Large Gimbal Trim**

Lamp : MR16 LED GU5.3 8W Max.  
GU10 LED GU10 8W Max.  
PAR16 LED E26 8W Max.



**B35602/3.5 inch Shower Trim with Dome Lens**

Lamp : MR16 LED GU5.3 6W Max.  
GU10 LED GU10 6W Max.  
PAR16 LED E26 6W Max.



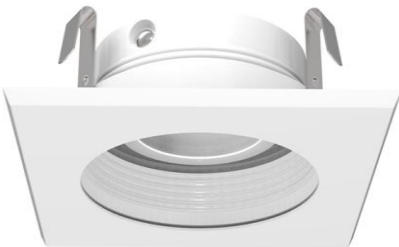
**B35802/3.5 inch Shower Trim with Frosted Lens**

Lamp : MR16 LED GU5.3 6W Max.  
GU10 LED GU10 6W Max.  
PAR16 LED E26 6W Max.



**B35011/3.5 inch Square Baffle Trim**

Lamp : MR16 LED GU5.3 8W Max.  
GU10 LED GU10 8W Max.  
PAR16 LED E26 8W Max.



**BS35001/3.5 inch Square Baffle Trim**

Lamp : MR16 LED GU5.3 8W Max.  
GU10 LED GU10 8W Max.  
PAR16 LED E26 8W Max.



**BS35002/3.5 inch Square Reflector Trim**

Lamp : MR16 LED GU5.3 8W Max.  
GU10 LED GU10 8W Max.  
PAR16 LED E26 8W Max.



**BS35007/3.5 inch Square Gimbal Trim**

Lamp : MR16 LED GU5.3 8W Max.  
GU10 LED GU10 8W Max.  
PAR16 LED E26 8W Max.

RECESSED DOWNLIGHT

