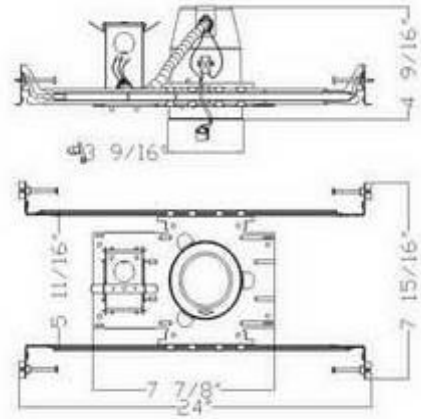


A3
3 inch New Construction Non-IC
Recessed Light

Catalog #		Prepared by	
Project		Date	
Notes			



3" New Construction Non-IC Housing

Housing

- 1) Die-formed aluminum for maximum heat dissipation and rust protection
- 2) Designed for New Construction installation
- 3) Housing can be installed in 1/2" to 1-3/8" thick ceilings.
- 4) Housing is Non-IC rated must be kept at least 3" away from insulation

Hanger Bar

- 1) Allow housing to be positioned and locked at any point within a 24" joist span.
- 2) Can be shortened for 12" joists
- 3) Can be positioned on long or short axis of the housing
- 4) Contain integral nail
- 5) Hanger fit onto T-bar spline for quick alignment

Junction Box

- 1) ETL listed for through branch wiring
- 2) 2 in-2 out or 4 in-4 out J-box for your better choices
- 3) Designed for straight through conduit runs
- 4) 1/2" and 3/4" romex wiring knockouts

Order Matrix

A B C D E

Item No.: A3

A	Series
A3	3" New Construction NON-IC

B	J-BOX
C	4 in-4 out
C	2 in-2 out

C	Input Voltage
	120V
	277/277V

D	Wattage
L3	LED 3W
L8	LED 8W

LED RECESSED LIGHT



Lamp

	E	Color Temperature (LED)
LED GU10 Lamp 8W max. MR16 GU5.3 8W Max. PAR16 E26 8W Max.	28K	2800k
CRI>80%	35K	3500K
PF>0.9	50K	5000K
Color Temperature:2800K-6500K	60K	6000K

Listing

ETL listed for damp location W/Feed through

Other Special requirement please confirm with factory

LED RECESSED LIGHT



3" TRIM OPTICS



B3001/3 inch Baffle Trim

Lamp : MR16 LED GU5.3 8W Max.
GU10 LED GU10 8W Max.
PAR16 LED E26 8W Max.



B3002/3 inch Reflector Trim

Lamp : MR16 LED GU5.3 8W Max.
GU10 LED GU10 8W Max.
PAR16 LED E26 8W Max.



B3006/3 inch Wall Washer Trim

Lamp : MR16 LED GU5.3 8W Max.
GU10 LED GU10 8W Max.
PAR16 LED E26 8W Max.



B3007/3 inch Gimbal Ring Trim

Lamp : MR16 LED GU5.3 8W Max.
GU10 LED GU10 8W Max.
PAR16 LED E26 8W Max.



B3008/3 inch Gimbal Trim

Lamp : MR16 LED GU5.3 8W Max.
GU10 LED GU10 8W Max.
PAR16 LED E26 8W Max.



B3802/3 inch Shower with Frosted Lens

Lamp : MR16 LED GU5.3 6W Max.
GU10 LED GU10 6W Max.
PAR16 LED E26 6W Max.

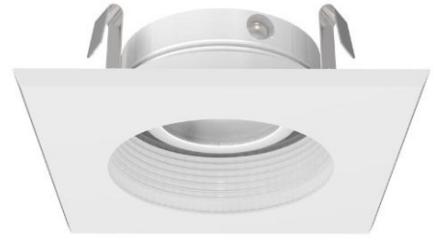
LED RECESSED LIGHT





BS3011/3 inch Square Trim

Lamp : MR16 LED GU5.3 8W Max.
GU10 LED GU10 8W Max.
PAR16 LED E26 8W Max.



BS3001/3 inch Square Baffle Trim

Lamp : MR16 LED GU5.3 8W Max.
GU10 LED GU10 8W Max.
PAR16 LED E26 8W Max.



BS3002/3 inch Square Reflector Trim

Lamp : MR16 LED GU5.3 8W Max.
GU10 LED GU10 8W Max.
PAR16 LED E26 8W Max.



BS3007/3 inch Square Gimbal Trim

Lamp : MR16 LED GU5.3 8W Max.
GU10 LED GU10 8W Max.
PAR16 LED E26 8W Max.

